

TealAuto User's Manual



Program Version 1.75
Last Updated: August 21, 2007

Table of Contents

Introduction	1
<i>Contents</i>	<i>1</i>
<i>Installing</i>	<i>1</i>
<i>Terms used in this document.....</i>	<i>2</i>
Chapter 1 – Overview	3
<i>Using TealAuto.....</i>	<i>3</i>
<i>Fueling Logs</i>	<i>3</i>
<i>Trip Logs</i>	<i>3</i>
<i>Service and Expense Logs.....</i>	<i>3</i>
<i>Reports and Summaries</i>	<i>3</i>
<i>Configuration.....</i>	<i>4</i>
<i>Meter Minder.....</i>	<i>4</i>
Chapter 2 – Fueling Logs.....	5
<i>Fueling Entry Screen</i>	<i>5</i>
Fueling Types	5
Odometer Reading.....	5
Data Fields.....	6
Fuel Quantity and Price	6
Notes	6
Converting Units	6
Chapter 3 – Trip Logs.....	7
<i>Trip Entry Screen</i>	<i>7</i>
Trip Types.....	7
Accounts	7
Notes	7
Chapter 4 – Service and Expense Logs	8
<i>Scheduled Services Screen</i>	<i>8</i>
<i>Vehicle Services Screen</i>	<i>8</i>
<i>Services Entry Screen</i>	<i>9</i>
Service/Expense Types	9
Data Items	9
Notes	9
Chapter 5 –Reports and Summaries.....	10
<i>Start and End Dates</i>	<i>10</i>
<i>Summary Reports.....</i>	<i>10</i>
Text.....	10
Memo Pad	10
Doc File	11
CSV Formats	11
Summary Statistics	11
<i>Comparison Reports.....</i>	<i>14</i>
Vehicles	14
Accounts	14
Payment Types.....	14
Fuel Stations	14
Service Stations	14
Fuel Grades	15
Fuel Brands	15
<i>Report Types</i>	<i>15</i>
Bar Charts.....	15
Timeline Graphs.....	15

Chapter 6 – Configuration	16
<i>Vehicles</i>	16
<i>Fuel Stations</i>	16
<i>Fuel Grade.....</i>	17
<i>Fuel Brands</i>	17
<i>Service Locations</i>	17
<i>Services.....</i>	17
<i>Accounts.....</i>	17
<i>Payment Types</i>	18
Chapter 7 – Meter Minder.....	19
Chapter 8 – Settings (Preferences)	20
<i>Services</i>	20
<i>Meter.....</i>	20
<i>Units.....</i>	20
Distance:.....	20
Fuel Quantity:.....	20
Fuel Efficiency:.....	20
Chapter 9 – Converting Units	21
<i>Opening the Conversion Calculator</i>	21
<i>Using the Conversion Calculator.....</i>	21
Chapter 10 – Using Services.....	22
<i>Creating Services</i>	22
<i>Attaching Services.....</i>	22
<i>Scheduling Services</i>	22
Initial Service.....	23
Service Intervals	23
Scheduled from Last Event.....	23
Service Summaries.....	23
Chapter 11 – Advanced Reports.....	24
<i>Fuel Efficiency.....</i>	24
<i>Pump Accuracy.....</i>	24
<i>Quality of Gas</i>	24
<i>Octane Mileage</i>	24
<i>Expense Summaries.....</i>	25
<i>Lease Mileage.....</i>	25
Chapter 12 – Exporting Data to a Spreadsheet.....	26
<i>Format.....</i>	26
Example:.....	27
Chapter 13 – Importing Data from a Spreadsheet.....	29
<i>File Format.....</i>	29
<i>Getting the Data from the Desktop.....</i>	30
<i>Selecting the Memo.....</i>	30
<i>Setting Options.....</i>	31
<i>Selecting Columns.....</i>	32
<i>Undoing Changes.....</i>	32
Chapter 14 – Purging old Records.....	33
APPENDIX A – Registering	34
APPENDIX B – Contact Info	34
APPENDIX C – Products.....	35
APPENDIX D – Revision History.....	37
APPENDIX E – Legal Notice.....	39
CUSTOMER LICENSE AGREEMENT	39

Introduction



Thank you for trying TealAuto, the advanced automobile mileage and expense-tracking program for PalmOS. TealAuto can be used to record fill-ups, trip distance, service and expenses for multiple vehicles. The program is highly configurable, supporting custom services, gas brands, gas grades, service stations and billing accounts. Unmatched reporting capabilities also allow exporting and summarizing of information in charts, graphs, memos, or documents.

Contents

This archive contains the following files:

Program files:

TEALAUTO.PRC	The TealAuto program file
TPSETUP.EXE	Windows easy-installer program

Document files:

AUTODOC.PDF	This document in Adobe Acrobat (PDF) format
AUTODOC.PDB	This document in Palm (TealDoc) format
AUTODOC.HTM	This document in HTML format (sans images)
REGISTER.HTM	TealPoint Registration form in HTML format
REGISTER.TXT	TealPoint Registration form in text format

Installing



Use the Palm Install Tool that comes with your organizer to install the program file **TEALAUTO.PRC**. The Palm Install Tool can be found as an icon along the left hand side inside the Palm Desktop program on your desktop computer.

Instructions on how to use the PalmOS Install Tool are in the User Handbook that came with your Palm, Handspring, CLIE, WorkPad, or other PalmOS handheld.

You may also wish to install the manual file **AUTODOC.PDB**, which is this document in handheld-friendly format for reading with our product TealDoc.

On a Windows PC, you can alternatively run the automatic installer program double-clicking on the **TPSETUP.EXE** installer program, and following the on screen prompts.

Terms used in this document

Hardware Buttons:

The four physical buttons (typically labeled Date, Address, To Do, and Memo) on the bottom of the handheld.

Scroll Up/Down Buttons:

The physical rocker switch or separate buttons at the bottom center of the handheld.

Graffiti:

The special letter-like symbols you write to enter text with your stylus.

Graffiti Entry Area:

The rectangular area at the bottom of the display screen where you can write letters using the graffiti input language.

Silkscreen Buttons:

The four, printed circular, tap areas (typically labeled Home, Menu, Calculator, and Find) to the left and right of the graffiti drawing area.

Menus:

The drop-down menus you get when tapping on the silkscreen Menu button.

Chapter 1 – Overview

TealAuto is a convenient and powerful data collection and analysis system, allowing you to easily enter fueling, service, and trip information while on the road. Powerful summary and analysis tools allow you to track and graph that information as well, all while still on the move. It even features a handy meter minder countdown timer with an alarm to keep those pesky parking tickets at a minimum.

TealAuto is a standard PalmOS application program. While it contains facilities for importing and exporting data to a desktop computer through the Palm Desktop, it does not contain a PC-component, and thus is compatible with PC's, Macs, and any type desktop computer that can HotSync to the handheld.

Using TealAuto



Once installed, run TealAuto by tapping on the “TealAuto” application icon on the PalmOS application launcher screen, reachable by tapping the “Home” silkscreen button on the handheld.

TealAuto is easy to use, and consists of six basic interface screens, reachable by six icons in the upper right corner of each screen. From left to right and top to bottom, the icons correspond to: Fueling Entries, Trip Entries, Service and Expense Entries, Reports and Summaries, Configuration, and Meter Minder.

Fueling Logs



The *Fueling Logs* screen is used to log information about gas station stops, and records the date, station, odometer readings, notes, billing account, and the price, quantity, and grade of the fuel purchased.

Trip Logs



The *Trip Logs* screen logs trip, accident, and memo reports. Trip entries contain a date, start and stop odometer reading and allow assigning the elapsed mileage between up to three billing accounts. Accident and memo reports contain only one odometer reading, and can be used to store information relating to an event associated with a particular date or mileage.

Service and Expense Logs



Services and Expenses are logged into this screen, which stores the cost, date, vendor, and mileage associated with this event. Services and expenses can be chosen from a configurable list of entries. Services can also be assigned a repeating time or mileage interval, so TealAuto can remind you when regular maintenance is due.

Reports and Summaries



TealAuto features unmatched reporting and graphing capabilities, features accessible from the *Reports and Summaries* screen. Here, data can be summarized or exported to external formats including the memos, Doc files, and comma separated value (CSV) files. A wealth of analysis tools is available, allowing the break down of data records into text reports, bar charts, or timeline graphs.

Configuration



TealAuto is extremely configurable. In the *Configuration* screen, the user can define a virtually unlimited number of vehicles, gas brands, gas stations, gas grades, payment types, billing accounts and service/expense types.

Meter Minder



A simple but useful feature, the *Meter Minder* functions as a straightforward countdown timer with an alarm and multiple retries.

Chapter 2 – Fueling Logs

Fueling Logs	
Show:	Type
2/10	Full Fill-up
2/15	Partial Fill
2/16	Full Fill-up
2/26	Full Fill-up
3/5	Full Fill-up
3/16	Full Fill-up
3/30	Full Fill-up
3/31	Full Fill-up
4/9	Full Fill-up
4/17	Estimated
4/27	Full Fill-up

Last Fuel: 4/27/02 53220 mi

Edit New Entry

The *Fueling Logs* screen displays all fueling log entries for the current vehicle along with the date and selectable information about each entry, such as the type, odometer reading, calculated fuel efficiency (for full fill-ups), gas station, payment method, cost-per-mile, etc.

Tap “Edit” to enter the *Fueling Entry* screen to see or modify details for an existing entry or “New Entry” to create a new entry from scratch.

Fueling Entry Screen

Fill-Up: Full Fill-up

Date: 5/3/06

Odometer: 101586

Loc: Valero

Oct: 87 Regular

Quantity: 10.08

Total Cost: \$32.97

Pay: Advanta MC

For: Commuter

OK Cancel Del 26.2 mpg

Use the *Fueling Entry* screen to enter details for a stop to the gas station. An on-screen keypad is available for easy Graffiti-free entry of numerical values. When the “enter” button is pressed on the keypad, the next empty text field is automatically activated.

Fueling Types

Three fill-up “types” can be selected: *Full*, *Partial*, and *Estimated*. While all three accept the same data, distinguishing between different fueling stops with different types allows for selective report generation (see “Reports and Summaries”). For instance, it’s possible to generate fuel efficiency reports that ignore any results calculated using data from “estimated” fueling log entries. Also, “Partial” fill-ups are added together to calculate mileage values between “Full” fill-ups, so it’s important to mark partial fill-ups as such to avoid anomalous efficiency calculations.

Odometer Reading

Distance: 265 miles

OK

The odometer field is used to calculate distance traveled and efficiency between full fill-ups.

You can enter the current odometer value directly, or tap the “Plus” (+) button to enter the value as a change in miles (trip odometer) calculated since the last fill-up. **(New in 1.73)**

Data Fields

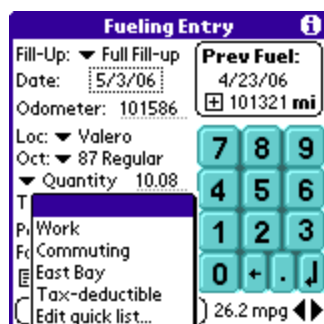
Through drop down menus, the gas station (location), gas grade (octane), payment type, and billing account can be selected for the fueling stop. These selections come from the user-defined list of available choices.

Fuel Quantity and Price

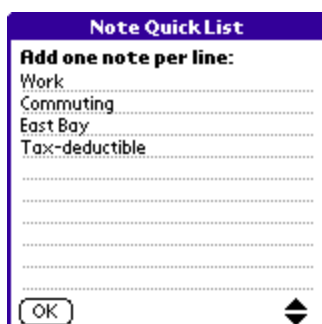
TealAuto supports two methods of entering gas quantities. While the amount purchased can be entered as a number of gallons (or liters), it can also be entered as a price per gallon. If so, the gallons purchased are calculated automatically when the total fuel cost is entered. The latter method is often preferable, as the fuel price can be entered while gas is being pumped, leaving only one quantity (the total cost) to be entered after pumping is done.

Notes

A freeform note or memo can be associated with each entry. The first line appears on the fueling entry screen. To expand the note to full screen, tap on paper-shaped the “note” icon.



To easily enter notes from a pre-defined list of entries, tap on the down-arrow button next to the note entry field. This “Quick List” of entries is useful if you need consistent keywords for accounting or other purposes. **(New in 1.73)**

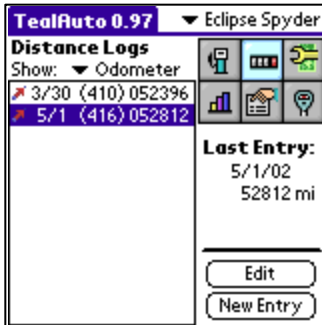


Select “Edit quick list” to define a list of custom keywords. Enter each word on it's own line, separated by a line break character.

Converting Units

When entering fuel quantities or prices in a foreign currency or measurement unit, use the “Unit Converter” from the “Edit” menu to convert the values to local equivalents. See the Unit Converter chapter of this document for more details.

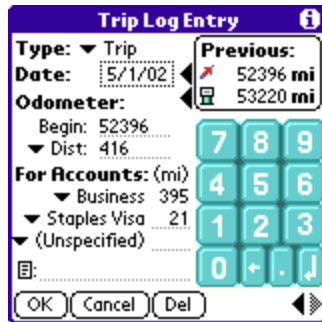
Chapter 3 – Trip Logs



The *Trip Logs* screen displays trip, memo, and accident entries for the current vehicle along with the date and selectable information about each entry, such as the type, odometer reading, elapsed miles, or note.

Tap “Edit” to enter the *Trip Entry* screen to see or modify details for an existing entry or “New Entry” to create a new entry from scratch.

Trip Entry Screen



The *Trip Entry* also features an on-screen keypad. As on the *Fuel Entry* screen, when the “enter” button is pressed on the keypad, the next empty text field is automatically activated.

Trip Types

Unlike fueling entries, trip entries contain a selectable type which affects which data fields are available. “*Trip*” entries contain both a start and end odometer reading, and are used to record events associated with traveling a specified distance. The end odometer reading can be specified as an actual final value, or as an elapsed distance (trip miles).

Note: When creating a “Trip” entry, **always enter both a starting and ending odometer reading**, as the difference between the two is required to calculate correct trip distances.

“Accident” and “Memo” entries, however, are used to record notes and events associated with a single location and time, such as an accident report or notable sighting.

Accounts

The elapsed mileage for “*Trip*” events can be divided by up to three separate billing or tracking accounts. This allows for, say, a trip to be easily billed as 50% business and 50% personal without creating two separate trip entries. Enter the miles to assign to the second and/or third account, and the remaining balance will automatically be calculated and assigned to the first account.

Notes

As with fueling entries, a freeform note or memo can be associated with each entry. To expand the note to full screen, tap on paper-shaped the “note” icon.

Chapter 4 – Service and Expense Logs

TealAuto 0.98 Eclipse Spyder

Service/Expenses

Show: ▼ Odometer

10/21/98	015200
8/16/99	024437
6/8/00	032470
1/8/01	037882
9/28/01	046110
1/11/02	049171

Service Due

Miles: 2859

Schedule

Edit

New Entry

The *Service and Expense Logs* screen displays non-fueling transactions that have an associated cost. This can include simple expenses such as parking and tolls, or scheduled maintenance items such as oil changes and tire rotation.

When scheduled services exist, the numbers of miles and days until the next scheduled service are shown under the heading “Services Due”. To view individual scheduled services, tap on the “Schedule” button to enter the *Scheduled Services* screen.

Scheduled Services Screen

Scheduled Services

Services:	Due at	Due on
Bridge Toll		
Car Wash		
Cooling Syste	62470	
Insp Ball Joints,	62470	
Insp Belts/Hos	79171	
Insp Brakes, Br	64171	
Insp Dist Cap	60000	

Next Scheduled Service:

Due in 2859 miles

LAST odometer entry: 53812

OK Edit Services...

The *Scheduled Services* screen shows all services attached to the current vehicle, along with the next date and/or miles at which the service is scheduled. Services listed only include those that have been explicitly linked to the current vehicle. To link or unlink services from the global available list, tap on the “Edit Services” button.

Vehicle Services Screen

While the global list of services is defined in the *Configuration* screen, **services must be linked to a specific vehicle** before they can be used for that vehicle. This customization process allows them to have periodic service intervals that vary from one vehicle to the next.

Vehicle Services/Expenses

Active	Available
Bridge Toll	Cooling System ...
Car Wash	Insp Dist Cap
Insp Ball Joints, ...	
Insp Belts/Hoses	
Insp Brakes, Bra...	
Insp Drive Belt	
Insp Drive Shaft	

< Add Edit

> Rem New

Schedule this service every...

☒ 30000 mi, first at 30000

☐ 13 wks, first on 4/12/02

OK

Tap on the “Add” or “Rem” buttons to link or unlink, services from the available global list. Tap on the “Edit” button to modify an unlinked service, or “New” to create a new service.

Once services are linked (“active”), they can be scheduled to issue a reminder after a specified number of weeks and/or miles. When so selected, the date or mileage of the first (next) scheduled service should be set. Future services continue at the specified intervals.

Services Entry Screen

Service/Expense Entry

Entry Type: Services Edit

Date: 3/16/04

Odometer: 14

Total cost: \$

Location: (Unspecified)

Payment: (Unspecified)

Account: (Unspecified)

Notes:

☐ Air Cond. Check

☒ Change Coolant

☒ Check Tires

☒ Insp Belts/Hoses

☐ Insp Brakes

OK Cancel Delete

The *Services Entry* screen is similar to both the *Fuel* and *Trip Entry* screens.

Service/Expense Types

Entries can be designated as “Service”, “Expense”, or “Misc” types. A scrolling list of services and expenses presents items to be selected for the transaction. When a “Service” or “Expense” type is selected, **only entries of that type appear**. When “Misc” is set, however, all items are displayed.

Data Items

Standard drop down lists and text entry fields allow for entry of odometer readings, total cost, entry location, payment, and billing account.

Notes

As with fueling entries, a freeform note or memo can be associated with each entry. To expand the note to full screen, tap on paper-shaped the “note” icon.

Chapter 5 –Reports and Summaries

The *Reports and Summaries* screen presents powerful tools to analyze trends and compute statistics from transaction log entries.

TealAuto 0.98
Reports/Charts
Start: 4/24/98
End: 5/1/02
All 1 Mon 3 Mon Year
Report Categories
Summaries Vehicles
Accounts Payment Types
Fuel Stations Serv/Exp Loc.
Fuel Brands Fuel Grades

Start and End Dates

The transactions used in the reports are specified by a range of dates, which default to the full range of entries present in the log when the screen is first entered. While start and end dates can be modified individually, on-screen buttons allow the start time to be easily set to encompass the 1-month, 3-months, or 1-year interval preceding the current end date. Hold down the Page-Up scroll button to abort a summary report in progress.

Summary Reports

Transaction Summaries
Output Format: Text
Vehicle(s): (All)
Account(s): (All)
☒ Show individual tr
☒ Include Full fill-ups
☒ Include Partial fill-
☒ Include Estimated
☒ Include Trips
☒ Include Accidents
☒ Include Memos
☒ Include Services
☒ Include Expenses
☒ Include Misc
OK Cancel

The first of eight report options, *Summary Reports* summarize statistics calculated from selected transactions in the specified date range. If the “Show individual transactions” checkbox is selected, they can also optionally show details of individual transactions, or export these transactions to external file formats for importing into spreadsheets, word processors, or other programs.

Reports can be generated in the following formats:

Report
TRANSACTION SUMMARY
3/5/04-4/5/04
Vehicle : Eclipse Spyder
Date : 3/6/04
Type : Full Fill-up
End miles : 75972
Fuel \$: 25.25
Payment : Advanta MC
Account1 : Commuter
Gallons : 11.58
OK Print Copy to Card

Text

Displays the information in a scrollable window. The text can be copied or edited, or printed to an attached printer if the program TealPrint is installed. Text reports are limited to 32k in size, however; so large reports should be output to Memo or Doc File format instead. They can also be copied to the root of an external storage card as the file “Report.txt” using the “Copy to Card” button.

Memo Pad

Exports the report to one or more Memo Pad memos. As memos are limited to 4k in size, TealAuto creates new memos as needed to fit all the text in the report. As text in memos can be selected and copied from the Palm Desktop software, exporting to the Memo Pad can be a handy way to export data to the desktop.

Doc File

Standard Doc files are a simple text file format supported by most PalmOS document readers like TealDoc. This option creates a new uncompressed document with a name of your choosing. If you have a desktop conduit installed as part of a PalmOS word processor that supports Doc format, this can be an alternate way to import data to the desktop.

CSV Formats

By default, three data formats above output text in human-readable form. Alternatively, data can be output in comma-separated-value (CSV) format commonly supported by most desktop spreadsheet and database programs. This can be particularly useful in conjunction with the "Copy to Card" feature.

See the "Exporting Data" section of this document for more information on using CSV files to export data to a spreadsheet program.

Summary Statistics

Summary reports calculate some basic statistics about the transactions in the date range, including:

Days of operation

Days between first and last transactions in date range

Fueling entries

Number of applicable fueling entries in date range

Trip log entries

Number of applicable trip entries in date range

Service/expenses

Number of applicable service and expense entries in date range

Total fuel purchased

Amount of gasoline purchased (gallons/liters)

Average fuel purchased

Average amount of gasoline purchased per fueling transaction (gallons/liters)

Average fuel efficiency

Average fuel efficiency in time period (mpg/kpl)

Average days between fuelings

Total elapsed days in the time period divided by the number of fueling events

Average miles between fuelings

Total elapsed miles in the time period divided by the number of fueling events

Average fuel cost per mile

Total fuel expenditures in the period divided by the number of miles

Total estimated fuel cost

If fuel entries exist in the time period with no cost entry, this item estimates the total fuel cost using the average fuel cost for missing entries.

Total trip distance

Total distance assigned to trip log entries in date range (miles/km)

Total distance

Total distance traveled (miles/km)

Total fuel cost

Total cost of fuel purchased (\$)

Average fuel cost

Average cost of fuel per transaction (\$)

Total service and expense cost

Total spent on service and expense entries (\$)

Logged operation cost

Total service, expense, and fuel cost (\$) based on actual logged costs

Logged cost per mile

Logged operation cost divided by total distance (\$ per mile/km)

Logged approximate cost per month

Projected total cost of operation per month (\$ per month) based on logged costs

Total operation cost

Total service, expense, and fuel cost (\$), using average fueling cost for fueling entries with no entered cost.

Total cost per mile

Total operation cost divided by total distance (\$ per mile/km) including estimated fuel cost for fueling entries with no entered cost

Total cost per month

Projected total cost of operation per month (\$ per month) including estimated fuel cost for fueling entries with no entered cost

Projected annual distance

Projected annual mileage based on date range (miles/km per year)

Adjusted direct expenses

Total fuel and service expenses, adjusted by each account's direct rate (\$)

Adjusted travel expenses (\$)

Total assigned trip miles, adjusted by each account's mileage adjustment rate (\$)

Adjusted travel miles (\$)

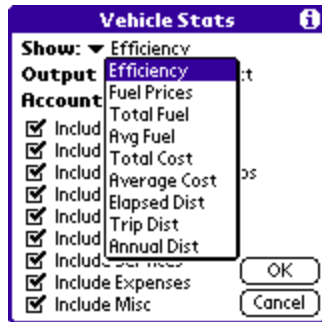
Total miles assigned to accounts (miles/km)

Comparison Reports

Comparison reports are designed to track a single statistic relating to a range of transactions, and analyze how that figure varies over time or in relationship to a particular variable. For instance, average fuel efficiency can be calculated for a range of dates, and compared from vehicle to vehicle. Additional conditions can be specified for each report, such as only including transactions from a specified account, for instance. Available choices differ by variable field.

Six different variable options are supported, each summarizing the following statistics:

Vehicles



- Average Fuel Efficiency
- Average Fuel Prices
- Total Fuel Purchased
- Average Fuel Purchased per Transaction
- Total Cost
- Average Cost per Transaction
- Elapsed Total Distance
- Total Trip Distance
- Projected Annual Distance (mileage)

Accounts

- Average Fuel Prices
- Total Fuel Purchased
- Average Fuel Purchased per Transaction
- Total Cost
- Average Cost per Transaction
- Total Trip Distance

Payment Types

- Average Fuel Prices
- Total Fuel Purchased
- Average Fuel Purchased per Transaction
- Total Cost
- Average Cost per Transaction

Fuel Stations

- Average Fuel Efficiency for Travel Prior to Fueling
- Average Fuel Efficiency for Travel After Fueling
- Average Fuel Prices
- Total Fuel Purchased
- Average Fuel Purchased per Transaction
- Total Cost
- Average Cost per Transaction

Service Stations

- Total Cost
- Average Cost per Transaction

Fuel Grades

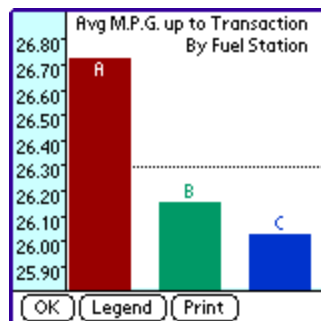
- Average Fuel Efficiency for Travel After Fueling
- Average Fuel Prices
- Total Fuel Purchased
- Average Fuel Purchased per Transaction
- Total Cost
- Average Cost per Transaction

Fuel Brands

- Average Fuel Efficiency for Travel After Fueling
- Average Fuel Prices
- Total Fuel Purchased
- Average Fuel Purchased per Transaction
- Total Cost

Report Types

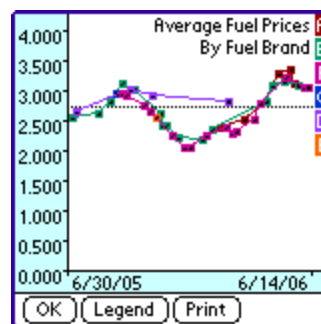
In addition to the standard text-based reports, comparison reports can be displayed in graphic bar and line charts for easy judging of trends.



Bar Charts

Bar Charts show the same calculated statistics summarized in a text report, but displays them as a simple bar chart with one bar for each variable item. The bars are identified with a single letter, corresponding to an off-screen legend, reachable by tapping on the “Legend” button.

A dotted line in the chart shows the average of all values **(New in 1.73)**.

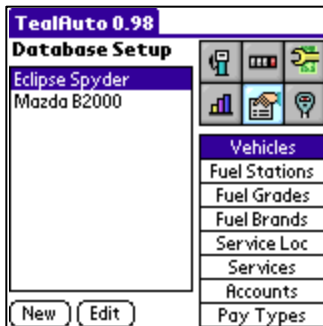


Timeline Graphs

Timeline Graphs show the actual data points used to calculate averages and totals found in the text reports. For a calculated average such as average fuel efficiency, for instance, a timeline graphs shows a data point for each transaction with that entry’s calculated fuel efficiency. For a calculated total such as elapsed travel distance, however, a data point is shown for the accumulated mileage up to each data point, so trends can be seen in how fast the miles add up.

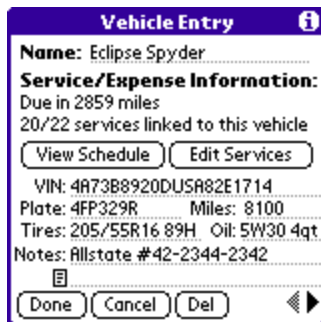
Reports can be very useful in analyzing the data you’ve collected. See **Advanced Reports** for more information on using them fully.

Chapter 6 – Configuration



The configuration screen allows for the creation and customization of database entries used as selections for entries in fuel, trip, and service logs. This customization allows for a near unlimited number of vehicles, services, accounts, etc.

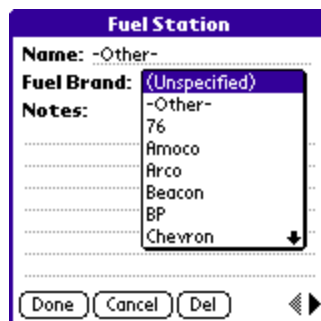
Vehicles



Vehicle Entries support a number of general purpose utility text fields such as VIN number, license plate, tire size, oil type and/or quantity, and a general purpose note field. Of particular interest is the “miles” field, which is used to calculate initial fuel efficiency for the first fueling and the estimated time and mileage before initial service is due.

Also present are two buttons used to view currently due services (View Schedule) or attach services to the vehicle (Edit Services). Services **must be attached to a vehicle** before they can be used. See the “Using Services” chapter for more information on editing and using scheduled services.

Fuel Stations



Fuel stations support a general-purpose note field, typically used to store the station's location, address, or phone number. In addition, it can also be linked to a gas brand if the station is a member of a chain.

Fuel Grade

Fuel Grades are typically used to track the type of gas used in a fueling, such as “regular”, “premium”, “plus”, or “supreme”, or the octane rating for fuel.

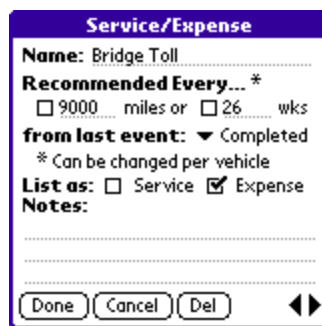
Fuel Brands

Fuel Brands support a note field and typically track the company, chain, or brand name associated with the gasoline.

Service Locations

Service Locations include garages and service stations which perform automobile maintenance, or parking structures and lots that charge itemized expenses.

Services

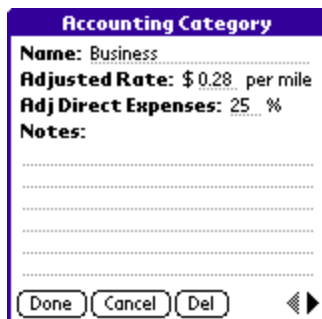


Services are expense items that can be charged to a vehicle. Entries in this screen can be designated to appear as a “service” or “expense” item or to appear for both types of service log entries. If neither is checked, the item will not be selectable.

Items can also be set to require regular scheduled service by mileage and/or elapsed weeks. Furthermore, the time/mileage interval specified here can set to restart either whenever the service was last performed (“Completed”), or repeat with a regular interval (“Scheduled”) irrespective of when the actual date it was last performed.

The schedule intervals set on this screen are only used as initial settings when a service is first applied to a vehicle. Once added, the service intervals can be individually adjusted in the vehicle’s separate service screen.

Accounts



Account entries are generally used to track the billing purpose of expenses or trip mileage, and are thus set to general categories such as “business”, “personal”, or “commuter”. They can also be used to assign expenses or travel to specific clients or customers as well.

In addition to a general-purpose note field, account entries support two rate fields used in summary reports.

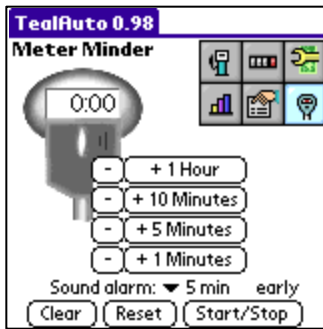
The first, an “adjusted trip” rate, assigns a cost-per-mile value to mileage assigned to this account, while the second, an “adjusted direct expense” rate assigns a percentage to be applied to fueling and expense entries assigned to this account.

When generating summary reports, the “adjusted rate” values for corresponding transactions are calculated and totaled for transactions where an account has been specified. The precise use of these fields is not enforced, but they are typically used to expenses reimbursed by employers at different rates, or estimate tax deductions for expenses with differing deductibility rates.

Payment Types

Payment types are typically used to track how an expense was paid for, be it cash, check, credit card, or more specific selections, such as a particular checking account or card.

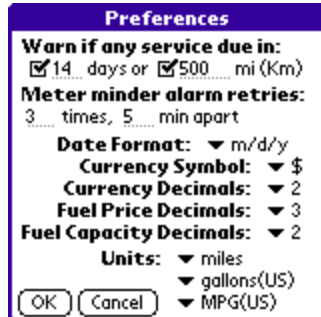
Chapter 7 – Meter Minder



The meter minder provides a handy countdown timer to warn when your parking meter is about to expire. The alarm can be set to sound 1-10 minutes before the timer expires, or to retry a specified number of times through settings in the program settings screen.

Chapter 8 – Settings (Preferences)

Services



Preferences

Warn if any service due in:
☒ 14 days or ☒ 500 mi (Km)

Meter minder alarm retries:
3 times, 5 min apart

Date Format: ▼ m/d/y
Currency Symbol: ▼ \$
Currency Decimals: ▼ 2
Fuel Price Decimals: ▼ 3
Fuel Capacity Decimals: ▼ 2

Units: ▼ miles
▼ gallons(US)
▼ MPG(US)

OK Cancel

The services warning period can be set here. Whenever TealAuto is run, it checks to see if the current mileage and date fall within the warning period for any scheduled service, and will put up a reminder message if either is true.

Meter

The meter minder can be set to re-sound the alarm if the initial alarm is not answered. The duration and retry count can be set on the preferences screen.

Units

TealAuto supports flexible settings for the units used to measure currency, fuel, and efficiency, as well as the number of decimal points displayed for each value.

Distance:

- miles
- kilometers

Fuel Quantity:

- gallons(US)
- gallons(imperial)
- litres

Fuel Efficiency:

- miles per gallon (US)
- miles per gallon (Imperial)
- litres/100 km
- kilometers per litre
- gallons per 100 miles (US)
- gallons per 100 miles (Imperial)

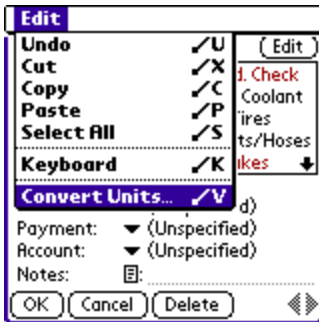
Note that for consistency in calculations, TealAuto currently expects all records to be stored in a single “home” set of standard units. When values in different currency or fuel units have to be entered (say, when traveling abroad), those values must be first converted to local units using the **Unit Converter**.

It's also important to note that changing other unit preferences only changes the text labels used throughout the program and fuel efficiency calculations. Data already entered in databases keep the same numbers. Thus, once measurement units are chosen, data should consistently be entered in the same units from that point onwards. If units are subsequently changed, previously-entered will not be adjusted, but will retain their originally entered numerical value but display with the new unit labels.

Chapter 9 – Converting Units

TealAuto requires that all data records be stored using a single set of consistent currency, fuel, and distance units. However, when traveling to other countries, TealAuto unit converter helps translate foreign measurement values to local units.

Opening the Conversion Calculator



Open the unit converter by choosing “Convert Units” from the edit menu on the text entry screen. If the text cursor is active, the contents of that field will automatically be loaded into the conversion calculator.

Using the Conversion Calculator



On the left side of the calculator, a list of supported conversions will appear. A few common conversions are listed, though you can remove entries or add your own using the add/delete/rename buttons.

Each conversion is linked to a conversion “factor”. The incoming number is multiplied by this value to calculate a converted product. When converting currencies, you may need to periodically adjust this multiplication factor to match current exchange rates.

When done, tap “OK” to close the calculator, or tap “Paste Result” to insert the converted product back into a previously active text field.

Chapter 10 – Using Services

In order to use TealAuto to track services and issue reminder when they are due, they must first be:

- 1) created in the global services list (In the **Configuration Screen**)
- 2) attached to each vehicle to which they apply (In the **Edit Services Screen**)
- 3) scheduled to appear with a distance/time interval for that vehicle (In the **Edit Services Screen**)

Once done, TealAuto will check for services due every time the program is run, and bring up a reminder if any are required.

Creating Services

Service/Expense

Name: Bridge Toll

Recommended Every... *

☐ 9000 miles or ☐ 26 wks

from last event: ▼ Completed

* Can be changed per vehicle

List as: ☐ Service ☒ Expense

Notes:

Done Cancel Del

Add a service in the *Configuration Screen* under *Services*. Here, you can set the default interval for the service, and also whether the service bases the next service on when the last one was performed ("Completed"), or on regular intervals from the very first scheduled service ("Scheduled").

Attaching Services

Vehicle Services/Expenses

Scheduled	Available
Bridge Toll	Air Cond. Check
Car Wash	Change Coolant
Check Tires	Detailing
	Insp Belts/Hoses
	Insp Brakes
	Inspect Lights

< Add > Rem Edit New

Schedule this item every...

☐ 9000 mi, first at 9000

☐ 26 wks First on: 10/10/05

OK

Attach services to a vehicle on the **Edit Services** screen, accessible from either the *Vehicle Configuration* or *Scheduled Services* screen.

Scheduling Services

Scheduled Services

Services	Due At	Due On
Air Cond. Check		10/10/05!
Bridge Toll		
Car Wash	9000	10/10/05!
Change Coolan	40000	
Check Tires		10/10/05!
Detailing	9000	10/10/05!
Insp Belts/Hos	6000	10/10/05!

Next Scheduled Service:

Due in 6000 miles and 0 days

OK Edit Services Summary

When TealAuto is first run, it creates a default list of commonly needed services set to typical services intervals. When you create new services, you also set a default interval for the new service. Services and service intervals vary from vehicle to vehicle, however, so you should adjust these entries according to your vehicle maintenance manual.

Initial Service

When adding a new service to a vehicle in TealAuto, the date and/or mileage of the first scheduled service should be set to when the *next* service is due. With a new vehicle before its first oil change, this is typically the same as the service interval. For instance, if tire rotations are required every 6000 miles, then the first tire rotation is usually done at 6000 miles. Some vehicles require a special service after the initial break-in period, however, so some adjustment may be necessary for the first service interval.

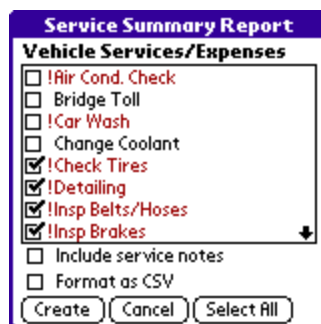
Service Intervals

Maintenance manuals typically break down service into minimum regular intervals; corresponding to the most frequently needed service--oil changes--which are needed every 3000-7500 miles, depending on the vehicle and severity of use. Other services, such as tire rotation, wheel alignment, and coolant service, occur at less frequent regular intervals, such as every 2, 3, 4, or more oil changes.

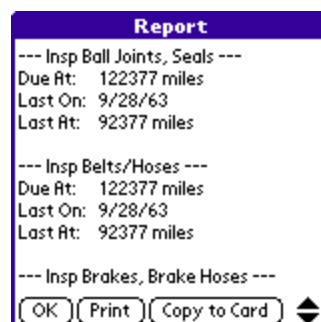
Scheduled from Last Event

Events can be scheduled from either the last event completed or scheduled, depending on preference. The "Completed" option schedules services from the last time it was performed, while the "Scheduled" option schedules it based on the first scheduled occurrence. For instance, if you have an oil change scheduled at every 3000 miles, and you log one at 12150 miles, you can choose to have the next one automatically scheduled at 15150 miles ("Completed") or at 15000 miles ("Scheduled").

Service Summaries



Sometimes it's useful to generate a list of past or upcoming services for bookkeeping purposes or to take to a service station. To generate one, select Summary from the *Scheduled Services* screen. You'll be allowed to select which services to include, as well as the output format of the summary.

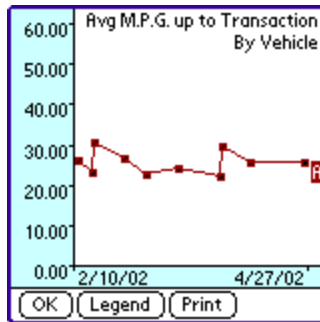


The report will include when the selected services were last performed (**New in 1.73**) and when they are next due. When generated, you can optionally print out the report (if TealPrint is installed) or export the report to a text file on an external storage card.

Chapter 11 – Advanced Reports

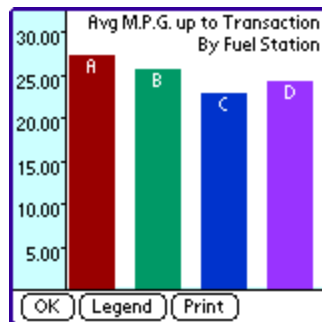
Tracking expenses and mileage would be of little use without reporting tools, and TealAuto's report generation tools can be used to generate a wide range of reports and summaries. Here are some common useful reports you can generate:

Fuel Efficiency



Fuel efficiency is the most common statistic compiled from the logs. Tracking fuel efficiency gives a good snapshot of the health of a vehicle, as an unexpected drop in efficiency can warn of low tire pressure, improper tuning, or required service. Fuel efficiency can be tracked either as a calculated item in a summary report, or as a graph or chart when plotted by vehicle, fuel, or station. In tracking fuel efficiency, note that one can easily omit the use of estimated or partial fill-ups by un-checking them from the list of acceptable transactions prior to generating the report.

Pump Accuracy



Ever wonder if that gas station down the street really gives you all the gas you've paid for? By charting fuel efficiency as a function of fuel station, you can feed your paranoia and check for sure.

Note that you should track the option **fuel efficiency before fueling** when evaluating the pumps, and limit the reports to one particular grade of gas for consistent values. Also take into account that some variance can occur between gas stations if you tend to go to them under different circumstances. For instance, a gas station located along a long stretch of highway is likely to report better mileage due to increased highway driving when compared to one located along a route for short errands within city limits.

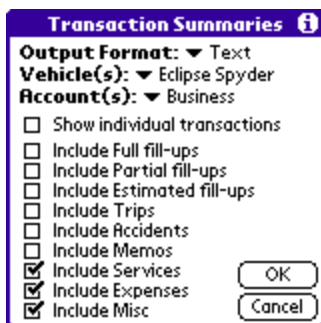
Quality of Gas

Gas brands sometimes generate strong loyalty from their customers. Is this justified from a fuel efficiency point of view? By tracking **the fuel efficiency after** a transaction, you can check when gas from a particular brand or station really gives you better gas mileage. When tracking as a function of gas station, it might also let you know if a station is really giving you that Premium gas you've paid for, or if grades of fuel really affect efficiency at all.

Octane Mileage

Most manufacturers recommend you use gasoline with an octane recommended in your owner's manual and no higher. Nevertheless, many of us sometimes like to "treat" our cars with a nice dose of the expensive stuff from time to time. While we can't really track whether our vehicle particularly enjoys this little treat, we can track the mileage as a function of gas grade to see how many more miles we get per gallon when we use the "good" stuff.

Expense Summaries



Transaction Summaries ⓘ

Output Format: ▼ Text

Vehicle(s): ▼ Eclipse Spyder

Account(s): ▼ Business

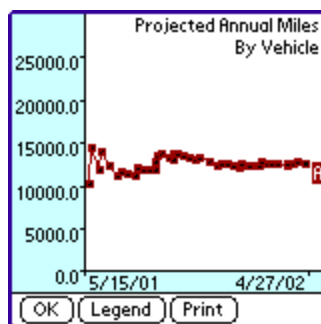
- ☐ Show individual transactions
- ☐ Include Full fill-ups
- ☐ Include Partial fill-ups
- ☐ Include Estimated fill-ups
- ☐ Include Trips
- ☐ Include Accidents
- ☐ Include Memos
- ☒ Include Services
- ☒ Include Expenses
- ☒ Include Misc

OK Cancel

Use expense summaries to total expenditures for a specified date range. Reports can be limited by vehicle or account, or only include specified transaction types. In summary reports, totals are reported both as raw numbers and as values modified by each account's "adjusted" rates.

To summarize the results for all accounts at once, use the "Account" report button to generate a comparison report of total expenditures as a function of account.

Lease Mileage



Of particular interest to many people who lease their vehicles is the number of miles they put on their cars annually. This is because most leases charge fees for excessive miles beyond a typical cap of 12000 miles per year.

Both summary and vehicle comparison reports can calculate the projected annual mileage for a vehicle based on the usage to date. To calculate the projected mileage, set the report start date to the beginning of the lease year. When creating a timeline of the annual mileage, the plot will show the estimated mileage as it is calculated using all the accumulated data so far from the start date. Thus, the

"projected" miles for the beginning of the term will vary more in the beginning, but will settle to a more stable value as more data points are added to reach a stable value.

Chapter 12 – Exporting Data to a Spreadsheet

Data logs from TealAuto can be exported to desktop programs and spreadsheets using the summary report generation tool. To do so, generate a summary report, making sure “Show individual transactions” is checked and by selecting a CSV export type. You may want to export certain transaction types, depending on what data you find relevant. The most common format to use in exporting data is CSV Memo.

Format



CSV (comma separated value) files are simple text files supported by most desktop database and spreadsheet applications. In CSV files, data in cells in output column by column and row by row, with the data for each cell separated by commas and a line break between rows. Data for each cell is typically enclosed in quotation marks, which is required if a cell contains a comma character inside. Quotation marks in a cell are denoted by two quotation marks (") next to each other.

TealAuto exports data in 22 columns, in the following order, preceded by a single line containing the column headers:

- | | |
|-----------------|--|
| 1. Vehicle | Name of the vehicle to associate with the record |
| 2. Date | Date of entry matching format set in Palm Preferences |
| 3. Type | Type of entry |
| 4. Beg Miles | Primary mileage for this entry (trip entries only) |
| 5. End Miles | Ending mileage for this entry |
| 6. Fuel \$ | Fuel Cost |
| 7. Expense \$ | Expense associated with this record |
| 8. Payment | Payment Type (e.g. “credit card”, “cash”, etc) |
| 9. Account1 | Billing account (e.g. “Client1”, “Commute”, etc) |
| 10. Account2 | Billing account (e.g. “Client1”, “Commute”, etc) |
| 11. Account3 | Billing account (e.g. “Client1”, “Commute”, etc) |
| 12. Miles1 | Miles to associate with Billing Account 1 |
| 13. Miles2 | Miles to associate with Billing Account 2 |
| 14. Miles3 | Miles to associate with Billing Account 3 |
| 15. Gallons | Fuel quantity entered |
| 16. Grade | Fuel grade (e.g. “Super”, “Premium”, etc) |
| 17. \$/gal | Fuel cost |
| 18. M.P.G. | Fuel efficiency |
| 19. Station | Service station (e.g. “Shell”, “Bob’s fix-it garage”, etc) |
| 20. Expense Loc | Expense location (e.g. “Downtown Garage”, etc) |
| 21. Services | List of services separated by pipe () character |
| 22. Note | Note |

As not all fields apply to all types of log entries; cells are left blank if they do not apply to a particular transaction type.

Example:

Below is a simple example of a one-transaction CSV entry. Note that the label line is actually a single very long line which may appear word-wrapped in a text editor, and multiple sequential commas indicate blank data fields.

```
"Vehicle","Date","Type","Beg miles","End miles"  
"Eclipse Spyder","10/21/98","Service",,"15200"  
"Eclipse Spyder","10/28/98","Full Fill-up",,"15419"  
"Eclipse Spyder","11/4/98","Full Fill-up",,"15704"
```

Step 1. Create the data

Generate a report, choosing "CSV Memo" as your output format.



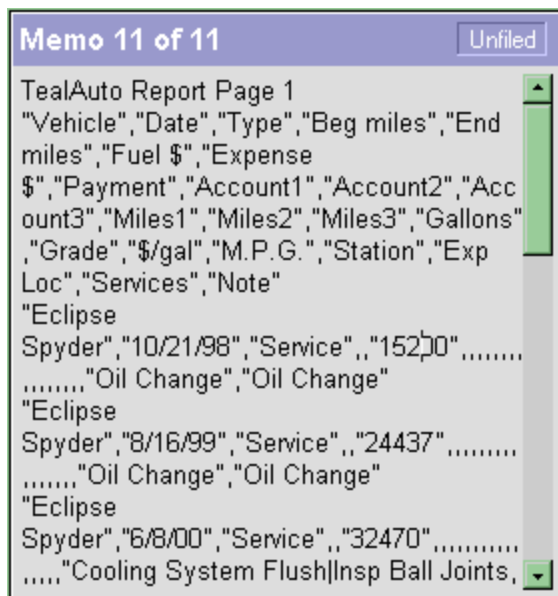
Shortcut: If you have an PC storage card reader, choose "CSV Text" instead and use the "Copy to Card" button to create a CSV file directly to the root of the card.

You can then skip to Step 4 and load the file directly into your spreadsheet program using your card reader.

Step 2. Get the data to the Desktop

HotSync to copy the memo to the Palm Desktop. You desktop memo pad conduit should be set to "Handheld overrides desktop" or "Synchronize the files"

Step 3. Paste together the CSV file



In the Palm Desktop, the memo should now appear with the exported CSV data. If the report is large, it might appear split across several memos.

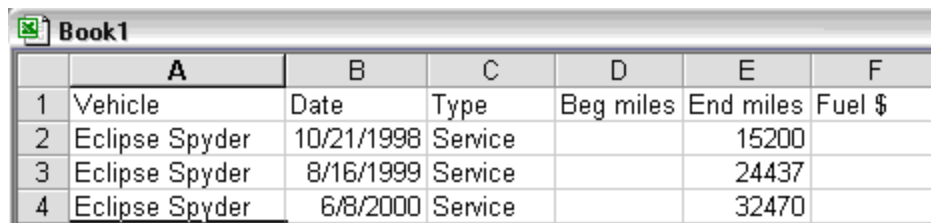
To create the final CSV file, start with a new blank document in a text editor such as NotePad or WordPad.

Copy the text from each of the memos into the file.

DO NOT INCLUDE the initial title line of each memo, as it is not part of the CSV data. Then save the document with a .TXT or .CSV file extension (such as CARDATA.CSV) and you should then have a file that can be imported into most any spreadsheet application.

Step 4. Import into spreadsheet program

If you've done this correctly, you should be able to load the CSV file into a spreadsheet program, with each value appearing in its own cell. When importing, set your "text delimiter" to a quotation mark, and the "record delimiter" to a comma, if requested.



The screenshot shows a spreadsheet application window titled "Book1". The spreadsheet contains a table with 7 columns and 4 rows of data. The columns are labeled A through F, and the rows are numbered 1 through 4. The data is as follows:

	A	B	C	D	E	F
1	Vehicle	Date	Type	Beg miles	End miles	Fuel \$
2	Eclipse Spyder	10/21/1998	Service		15200	
3	Eclipse Spyder	8/16/1999	Service		24437	
4	Eclipse Spyder	6/8/2000	Service		32470	

Chapter 13 – Importing Data from a Spreadsheet

To help transfer records entered externally in a spreadsheet or importing data when upgrading from another program, TealAuto supports a powerful, flexible data import system.

File Format

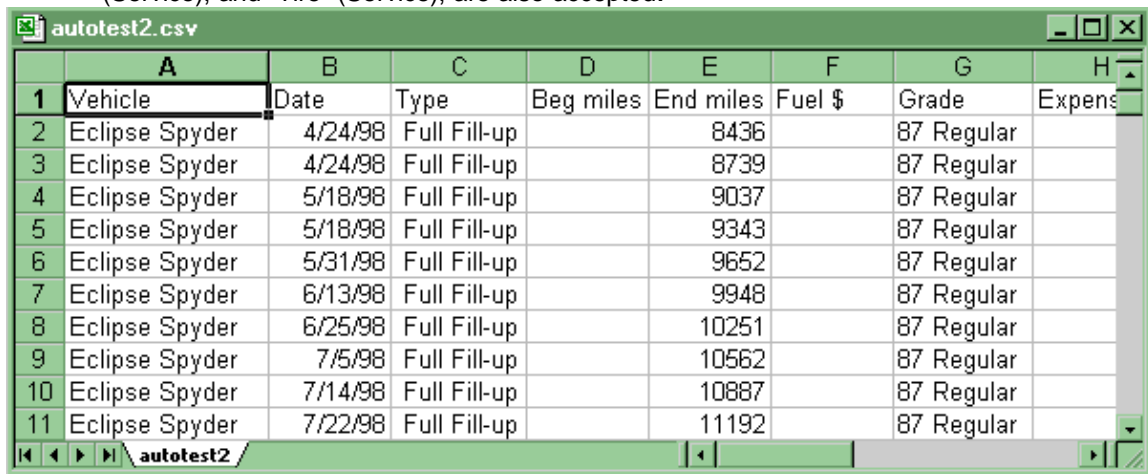
TealAuto accepts data imported from the MemoPad in the same or similar CSV format generated by exporting a summary as a CSV Memo. The import system is flexible, however, allowing for different column orders, missing columns, optional headers, and tab-separated files in addition to comma-separated ones.

Start by making sure the data begins in the top-leftmost cell in the spreadsheet, ideally reserving the first row as labels for each column of data. It is helpful, but not necessary, to set up the columns in the same order as the import headers described in the previous section. If labels are included, name them using the standard TealAuto label names, as this will help TealAuto auto-detect the contents of each column when converting the data.

While most columns are optional, you **must** define both a “date” and a “type” column for best results, so TealAuto will know which type of log file to create for each entry. Contents of the “type” column should be set to one of the 9 standard log type names:

1. Full Fill-up
2. Partial Fill
3. Estimated
4. Trip
5. Accident
6. Memo
7. Service
8. Expense
9. Misc

For ease of importing from third party programs, the keywords “Fuel” (Full Fill-up), “Oil” (Service), and “Tire” (Service), are also accepted.



	A	B	C	D	E	F	G	H
1	Vehicle	Date	Type	Beg miles	End miles	Fuel \$	Grade	Expense
2	Eclipse Spyder	4/24/98	Full Fill-up		8436		87 Regular	
3	Eclipse Spyder	4/24/98	Full Fill-up		8739		87 Regular	
4	Eclipse Spyder	5/18/98	Full Fill-up		9037		87 Regular	
5	Eclipse Spyder	5/18/98	Full Fill-up		9343		87 Regular	
6	Eclipse Spyder	5/31/98	Full Fill-up		9652		87 Regular	
7	Eclipse Spyder	6/13/98	Full Fill-up		9948		87 Regular	
8	Eclipse Spyder	6/25/98	Full Fill-up		10251		87 Regular	
9	Eclipse Spyder	7/5/98	Full Fill-up		10562		87 Regular	
10	Eclipse Spyder	7/14/98	Full Fill-up		10887		87 Regular	
11	Eclipse Spyder	7/22/98	Full Fill-up		11192		87 Regular	

When done, save the file in CSV file format (preferably comma separated) to continue.

Getting the Data from the Desktop

To import the data into the Palm Desktop, you must first open the CSV file into a text editor so it can be seen as text. To do this, open a text editor like NotePad. Choose the *Open* menu and load in the CSV file. You may need to change the *file types* control to show “All files” to see your CSV file. Then select all text and choose *Copy* from the *Edit* menu.

Now enter the Palm Desktop and go to the Memo screen. Choose *Paste* from the *Edit* menu to create a new memo with the contents of the CSV file. If the CSV is large it will be split across multiple memos.

Selecting the Memo

To begin the import process, start TealAuto and select *Import Records* from the *Program* menu. You'll be presented with a list of available memos.



Select the memo to import, or the first memo of a sequence if the data is split across multiple memos. If there are multiple memos and they appear out of order, go into the MemoPad program and place them in the correct order before continuing.

Setting Options



Once a memo is selected, TealAuto analyzes the file to guess the correct import options. However, you should verify them carefully to insure proper importing:

Default Vehicle

Defines which vehicle to assign to new entries when a vehicle column is not defined.

Number of Memos

The number of sequential memos to import.

Data Columns

The number of data columns in each row.

Skip 1st, 2nd line before each memo

Check these items if each memo contains one or two title lines that are not part of the CSV. The Palm Desktop automatically adds a title line when pasted data needs to be split across multiple memos. Other programs may add one or more title lines to specify, say the title of the report or the name of the vehicle.

First line holds column labels

Check this item if the first row of data contains labels and does not hold actual record data.

Column Separator

Set to “comma” or “tab” depending on the CSV file format.

Date Format

Set to the month-day-year order of dates contained in the imported data.

Selecting Columns



The last step when importing records is to select the contents of each column. Sample data from the first line of the CSV is presented, along with potential choices for each column. If the first line contains text labels, they will be shown as the sample data. If the labels match standard label names, TealAuto will detect them and preset those entries with the correct definition.

Some programs export data mixing fueling and service costs or service and fueling stations in the same column. When this is the case, set that column's type to either "fuel" or "service". TealAuto will automatically convert imported entries based on that line's log entry type.

Undoing Changes

TealAuto backs up the configuration and log entries before starting an import operation. To restore the previous settings after an unsuccessful import, select the *Undo Import/Purge* menu item from the *Program* menu.

Chapter 14 – Purging old Records



When old records are no longer needed, they can be deleted using the “Purge Records” item under the *Program* menu.

Records are backed up before deleting, so you can restore purged records from the backup if you make a mistake by immediately selecting the “Undo Import/Purge” menu item.

APPENDIX A – Registering

Registering allows you to use the program past the 30 day expiration period and turns off registration reminders.

Currently, you may register by snail mail or online with a credit card and a secured server from the store where you downloaded the software. For the first option, send the following information on a sheet of paper separate from your payment.

- Product Name
- E-Mail Address
- HotSync User ID (Pilot Name Required for Passkey generation. It can be found on the main screen of the HotSync application on the Pilot as "Welcome _____" or in the corner on a PalmIII or higher)
- Check (drawn off a US Bank) or Money Order for (\$19.95 US). No international checks or money orders please.

APPENDIX B – Contact Info

TealAuto by TealPoint Software
©2002-2006 All Rights Reserved.

TealPoint Software
454 Las Gallinas Ave #318
San Rafael, CA 94903-3618
We look forward to hearing from you.

Please visit us at www.tealpoint.com, or email us at support@tealpoint.com.

APPENDIX C – Products

Visit us online at <http://www.tealpoint.com> for our complete product line, including:

TEALAGENT (<http://www.tealpoint.com/softagnt.htm>)

Get news, movie times, stock quotes, driving directions, web pages and more without need for a wireless connection. TealAgent fetches and formats web-based content for offline viewing.

TEALALIAS (<http://www.tealpoint.com/softalia.htm>)

Free up memory and make the most of external expansion cards. Placeholder 'Alias' shortcut files automatically find, load, and launch apps and data from external SD cards, increasing free main memory.

TEALAUTO (<http://www.tealpoint.com/softauto.htm>)

Track and graph automobile mileage, service, and expenses with TealAuto, the complete log book for your car or any vehicle. Extensive customization options and unmatched in features and functionality.

TEALBACKUP (<http://www.tealpoint.com/softback.htm>)

Backup your valuable data with TealBackup, supporting manual and automatic backups to SD/MMC/CF cards and Memory Stick, backups through HotSync, and optional compression and encryption.

TEALDOC (<http://www.tealpoint.com/softdoc.htm>)

Read, edit, and browse documents, Doc files, eBooks and text files with TealDoc, the enhanced doc reader. Extensive display and customization options; TealDoc is unmatched in features and usability.

TEALECHO (<http://www.tealpoint.com/softecho.htm>)

Improve your Graffiti text input speed and accuracy, seeing what you write with TealEcho digital "ink". No more writing blind!

TEALGLANCE (<http://www.tealpoint.com/softglnc.htm>)

See the time, date, upcoming appointments and todo items at power-up with TealGlance. The TealGlance pop-up utility comes up when you power up your handheld letting you see your day "at a glance."

TEALINFO (<http://www.tealpoint.com/softinfo.htm>)

Lookup postal rates, area codes, tip tables, schedules, airports, and info from hundreds of free TealInfo databases. Create you own mini-apps; a handheld reference library.

TEALLAUNCH (<http://www.tealpoint.com/softlnch.htm>)

Launch applications instantly with the TealLaunch pop-up launcher and button/stroke-mapping utility. Map applications to button presses and pen swipes so you can get to your apps quickly.

TEALLOCK (<http://www.tealpoint.com/softlock.htm>)

Secure and protect your handheld with TealLock, the automatic locking program with encryption and card support. TealLock has unmatched features and customization options for personal or corporate use.

TEALMAGNIFY (<http://www.tealpoint.com/softlens.htm>)

Save your eyesight with TealMagnify, an ever-ready magnifying glass that works with most any program. TealMagnify lets you enlarge the screen for those times the text is too small to read.

TEALMASTER (<http://www.tealpoint.com/softmstr.htm>)

Replace Hackmaster with TealMaster, the supercharged 100%-compatible system extensions manager. TealMaster adds enhanced stability, configuration and diagnostic features and PalmOS 5.0 hack emulation.

TEALMEAL (<http://www.tealpoint.com/softmeal.htm>)

Save and recall your favorite restaurants with TealMeal, the personal restaurant database. With TealMeal's handy sorting and selection options, never ask "where to eat" again.

TEALMEMBRAIN (<http://www.tealpoint.com/softmemb.htm>)

Stop crashes and monitor your memory use with TealMemBrain, the application stack stabilizer. TealMemBrain boosts your stack space on OS3 and OS4 handhelds, eliminating the major cause of system instability.

TEALMOVER (<http://www.tealpoint.com/softmovr.htm>)

Beam, delete, rename, and copy files with TealMover, the file management utility for SD/CF/MS cards. TealMover lets you see, move, modify, hex edit, and delete individual files.

TEALMOVIE (<http://www.tealpoint.com/softmovi.htm>)

Play and convert high-quality video and synchronized sound with the TealMovie multimedia system. TealMovie includes a handheld audio/movie player and a Windows AVI/Quicktime converter program.

TEALNOTES (<http://www.tealpoint.com/softnote.htm>)

Insert freehand graphics anywhere with TealNotes "sticky notes" for Palm OS. TealNotes can be inserted into memos, to-do lists, address book entries--almost anywhere you currently have editable text.

TEALPAINT (<http://www.tealpoint.com/softpnt.htm>)

Paint, sketch, or draw with TealPaint, the all-in-one graphics paint program for PalmOS. Highlights include 20 tools, 16 patterns, 24 brushes, zoom, hires, layers, multi-undo, and a desktop converter.

TEALPHONE (<http://www.tealpoint.com/softphon.htm>)

Supercharge the address book with TealPhone, the contacts replacement with superior interface and options. Highlights include enhanced display, search, phone-dialing, groups, and linking.

TEALPRINT (<http://www.tealpoint.com/softprnt.htm>)

Print text and graphics to IR, serial, and Windows printers with TealPrint. With numerous connection options, TealPrint, is the all-in-one text and graphic printing solution.

TEALSAFE (<http://www.tealpoint.com/softsafe.htm>)

Store your passwords, credit cards, PIN numbers, and bank accounts in the TealSafe data wallet. With maximum security and encryption, TealSafe is a must for features and security.

TEALSCRIPT (<http://www.tealpoint.com/softscrp.htm>)

Replace Graffiti 1 or Graffiti 2 with TealScript, the text recognition system you can customize. Unlike other systems, you can make or change your own strokes for better speed and accuracy.

TEALTOOLS (<http://www.tealpoint.com/softtool.htm>)

Improve productivity with TealTools pop-up Palm Desk Accessories. TealTools includes a popup calculator, clock/stopwatch, preferences panel, editing panel, memopad, and a file/backup manager.

SHORTCIRCUIT (<http://www.tealpoint.com/softshrt.htm>)

A new twist on gameplay fused from your all time action puzzle favorites, connect falling conduit pieces into explosive loops in this frantic race against the clock.

APPENDIX D – Revision History

Version 1.75 – August 21, 2007

- Fixed last-service date in service summary reports to show correct date
- Updated memo reports to directly support new -palm databases to work around memorymgr crash bug in Palm Datamanager patch

Version 1.74 - June 24, 2006

- Fixed crash generating summary reports due to compiler optimization bug

Version 1.73 - June 13, 2006

- Added date and odometer of last time each service was performed in service summary report
- Added button to enter fueling odometer value as difference (trip odometer value) from last fueling
- Added "quick list" pick-list to fueling, trip, and service logs to select and insert note entries from a user-definable list
- Added dotted line showing average value in bar and timeline graphs
- Improved service reminder to show multiple services due
- Improved service due date calculations to use prior odometer entry if service entry is missing an odometer value

Version 1.70 – April 24, 2006

- Fixed "divide by zero" error that occurred if you set a service to repeat every 0 days or 0 weeks.

Version 1.69 – February 10, 2006

- Updated to display numbers with commas instead of periods when european number formats selected
- Updated number pads to input commas when period button pressed when european number formats selected
- Fixed scrolling of services on Scheduled Services screen
- Fixed crash when hitting scroll button on chart display screen

Version 1.65 – October 10, 2005

- Added "numeric" tagging of text fields requiring numbers (activates number-shift on Treos)
- Added "fnav" resource to fix 5-way navigation order on all screens
- Added option to base service due dates on scheduled date/miles instead of last completed entry
- Added option to generate service summary from scheduled services screen
- Added option to show cost/mile on gas summary list
- Added Treo scroll button support on text report screens
- Added auto-conversion of exported report text from Palm/Unix linebreak character (LF) to PC linebreaks
- Added service name to "service due" alarm
- Improved layout of services/expenses screen
- Updated code to automatically check and set backup bits for data files in case 3rd party app changes them
- Fixed exported reports from containing text from previous reports if new report is shorter
- Fixed truncation of long notes on log detail lists for entries prior to current year
- Fixed crash on service summary screen that occurred on some devices
- Fixed summary reports from including miles and data from other accounts when filtering by one account

Version 1.60 – March 11, 2005

- Updated to be more 5-way controller friendly

Version 1.59 – December 15, 2004

- Fixed crash when trying to generate timeline with only one data point

Version 1.58 – September 30, 2004

- Added autodetect and conversion of commas entered into numerical fields

- Updated lists to show full date for entries not in current year

Version 1.57 – June 23, 2004

- Fixed distance unit labels in reports when mixing metric volume (litres) with standard distance (miles)

Version 1.56 – June 1, 2004

- Fixed support for keypads on Samsung Phones

Version 1.55 – May 14, 2004

- Added support for alphabetic currency symbols

Version 1.52 – April 5, 2004

- Added option to export text reports directly to text/csv file on SD/CF/MS card.
- Fixed printing of graphs to TealPrint on OS5+ handhelds

Version 1.50 – March 16, 2004

- Added support for independently setting any combination of US, imperial, and metric units for distance, efficiency, and fuel.
- Added user-expandable currency/value unit converter calculator to edit menus
- Fixed display of small dividing line on log screens
- Rearranged Service/Expense entry screen to more intuitive entry order

Version 1.40 – March 8, 2004

- Added support for imperial Gallons in mixed unit calculations
- Fixed mileage calculation overflows when using mixed units
- Fixed minor calculation roundoff differences between fueling screen and report mileage

Version 1.00 - May 10, 2002

- Initial Release

APPENDIX E – Legal Notice

This archive is freely redistributable, provided it is made available only in its complete, unmodified form with no additional files and for noncommercial purposes only. Any other use must have prior written authorization from TealPoint Software.

- Unauthorized commercial use includes, but is not limited to:
- A product for sale.
- Accompanying a product for sale.
- Accompanying a magazine, book or other publication for sale.
- Distribution with Media, Copying or other incidental costs.
- Available for download with access or download fees.

This program may be used on a trial basis for 30 days. The program will continue to function afterwards. However, if after this time you wish to continue using it, please register with us for the nominal fee listed in the program.

CUSTOMER LICENSE AGREEMENT

YOU ARE ABOUT TO DOWNLOAD, INSTALL, OPEN OR USE PROPRIETARY SOFTWARE OWNED BY TEALPOINT SOFTWARE, INC. CAREFULLY READ THE TERMS AND CONDITIONS OF THIS END USER LICENSE BEFORE DOING SO, AND CLICK BELOW THAT YOU ACCEPT THESE TERMS.

1. License. You are authorized to use the Software Product owned and developed by TealPoint Software, Inc. on a single hand-held computing device on a trial basis for thirty (30) days. If after 30 days you wish to continue using it, you are required to register with TealPoint and pay the specified fee. This license is not exclusive and may not be transferred. You may make one copy of the Software for back-up and archival purposes only.
2. Ownership. You acknowledge that the Software Product is the exclusive property of TealPoint Software, Inc, which owns all copyright, trade secret, patent and other proprietary rights in the Software Product.
3. Restrictions. You may NOT: (a) decompile or reverse engineer the Software Product; (b) copy (except as provided in 1 above) sell, distribute or commercially exploit the Software product; or (c) transfer, assign or sublicense this license.
4. Disclaimer of Warranty and Liability. TEALPOINT MAKES NO WARRANTY, EXPRESS OR IMPLIED, AS TO THE ACCURACY, COMPLETENESS OR FUNCTIONING OF THE LICENSED SOFTWARE, INCLUDING WITHOUT LIMITATION, WARRANTIES OF MERCHANTABILITY OR OF FITNESS FOR A PARTICULAR PURPOSE, ALL OF WHICH TEALPOINT DISCLAIMS. ALL LIABILITY IS DISCLAIMED AND TEALPOINT ASSUMES NO RESPONSIBILITY OR LIABILITY FOR LOSS OR DAMAGES OF ANY KIND, DIRECT OR INDIRECT, INCIDENTAL, CONSEQUENTIAL OR SPECIAL, ARISING OUT OF YOUR USE OF THE LICENSED SOFTWARE, EVEN IF ADVISED OF THE POSSIBILITY THEREOF.
5. Termination. You may terminate this Agreement at any time by destroying your copy(ies) of the Software Product. The Agreement will also terminate if you do not comply with any of its terms and conditions, at which time you are required to destroy your copy(ies) of the Software Product and cease all use.
6. Applicable Law. This Agreement is governed by the laws of the State of California.