

# **TealType User's Manual**



Program Version 1.00  
Last Updated: April 8, 2002

## **Table of Contents**

<b>Description.....</b>	<b>1</b>
<b>Contents .....</b>	<b>1</b>
<b>Installing .....</b>	<b>1</b>
<b>Terminology.....</b>	<b>1</b>
<b>Overview .....</b>	<b>2</b>
<b>Overview .....</b>	<b>2</b>
<b>Using the Program.....</b>	<b>2</b>
Enabling .....	2
Typing .....	2
Typing Letters .....	2
Typing Other Characters .....	3
Options .....	3
Key Layout .....	3
Special Buttons .....	4
Hide popup lists.....	4
Hide popup char .....	4
Pass thru when held .....	4
No activation beeps .....	4
Extended chars only .....	4
<b>Appendix A – Compatibility .....</b>	<b>4</b>
<b>Appendix B - Revision History .....</b>	<b>5</b>
<b>Appendix C - Credits .....</b>	<b>5</b>
<b>Appendix D - Contact Info .....</b>	<b>5</b>
<b>Appendix E- Registering .....</b>	<b>5</b>
<b>Appendix F - Disclaimer .....</b>	<b>5</b>

## Description

Thank you for trying *TealType*. This program gives Palm users a new way to enter text. Using the Palm hardware application and scroll buttons, you can “type” letters, numbers, and symbols anywhere you have editable text. TealType can be fully customized in order to be as efficient as possible for each individual user.

## Contents

This archive contains the following files:

Program files:

TEALTYPE.PRC	The TealType program file
HACKMSTR.PRC	The <i>Hackmaster</i> System Extensions Manager

Document files:

TYPEDOC.PDF	This document in Adobe Acrobat (PDF) format
TYPEDOC.HTM	This document in HTML format (sans images)
TYPEDOC.PRC	This document in TealDoc format
REGISTER.HTM	TealPoint Registration form in HTML format
REGISTER.TXT	TealPoint Registration form in text format

## Installing



**Important note:** Before updating or deleting any Hackmaster program like TealType, be sure to disable the application first in the Hackmaster control screen.

TealType uses the HackMaster System Extensions Manager by Edward Keyes (\*See references below). This is a safe and standard way to add and manage extended system functionality on the PalmPilot.

Use the PalmPilot installer to install the program file *TEALTYPE.PRC* and *HACKMSTR.PRC*, if you do not already have it on your machine. Instructions on how to use the PalmPilot installer are in the PalmPilot Handbook that came with your Pilot, PalmPilot, or WorkPad.

You may also wish to install the manual file *TYPEDOC.PRC*, which can be read with our document reader program TealDoc.

## Terminology

TealType uses the four application buttons at the bottom of the Palm front panel. These buttons, typically mapped to the Datebook, Address, ToDo List, and MemoPad applications, are respectively referred to as buttons **1,2,3, and 4**. In addition, the two active states of the middle **scroll button** are referenced as **scroll-up** and **scroll-down**.



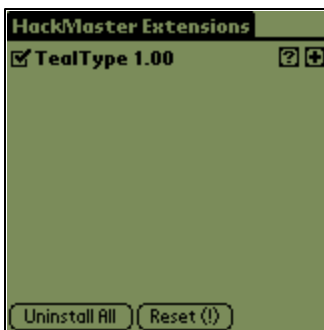
## Overview

TealType is a fun program. It offers a truly unique way to enter text. Its development started as a wacky concept that we conceived one day that we just had to implement to prove its viability. Basically, text is entered with button thumb combinations resembling button sequences in video games. While using it tends to be slower than someone well trained in some other input methods, it's relatively easy to enter text error-free with TealType, without the aid of a pen. Once a layout is learned, you can even type without looking.

Text is entered in TealType by pressing combinations of the four application buttons and the two states of the scroll button. First, an application button is pressed and held down. Next, another button is optionally pressed to select a letter. When both buttons are released, the letter is entered.

## Using the Program

To activate TealType, open up the HackMaster program and check the box to the left of TealType.



### Enabling

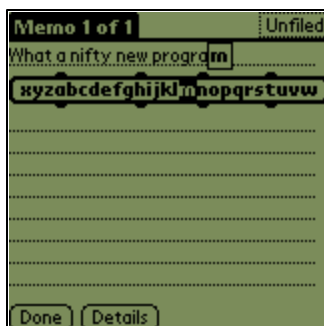
Once activated in Hackmaster, you can call TealType by pressing the two leftmost hardware buttons (**1+2**) or two rightmost buttons (**3+4**) at once. This tells the system to interpret hardware button presses as letters instead of application launch commands. Pressing the button combinations both down a second time will cause the hardware buttons to resume their normal functions.

## Typing

Once you have enabled TealType, you use it by pressing and holding down one of the four application buttons. This brings up a list of letters in the current layout to which you can scroll.

Each hardware button will map to a different letter of the alphabet according to the **key layout** you have selected. These **Home Keys** are distributed across the alphabet so that any other letter can be reached with a minimum of scrolling.

The TealType “keyboard”, comprised of the four hardware buttons, is divided into two parts. The left two buttons (**1** and **2**) are for your left thumb only and the right two (**3** and **4**) are for your right thumb only. You use one thumb on one half of the handheld to press the button of the letter closest to the one you wish to type, and use your other thumb's two buttons **on the other side of the handheld** to scroll left (**L**) and right (**R**) through the characters. Thus, if you begin by pressing the “2” button with your left thumb, the right thumb would use the “3” and “4” buttons to scroll left and right. With any of the four “initial” buttons, you may also follow up with the **up** and **down** scroll hardware buttons to type numbers, symbols, and punctuation, and to perform functions such as deleting, inserting a space, and indenting.



### Typing Letters

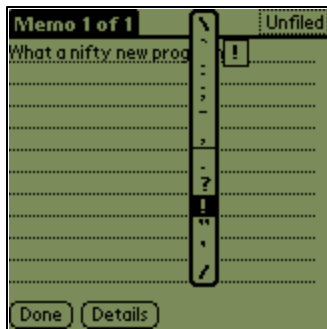
When you press a hardware button, the **alphabet bar** appears with a character corresponding to the button highlighted. If the button is released, that character will be typed. While the button is held down, however, the two buttons on the free-thumb side can be used to scroll to another nearby letter.

In the standard **Alphabetical** layout, the home keys are **A, H, N,** and **T**. Thus, to type the word “ping”, the sequence is:

(3RR), (2R), (3), (2L).

### Typing Other Characters

Other characters can be typed by using the scroll **up** and **down** buttons to select letter instead of **left** and **right** scroll buttons of the free thumb.



Each of the four home keys is attached to a different list. Pressing that home key initially selects which list to pop up. By default, the lists attached to the buttons are:

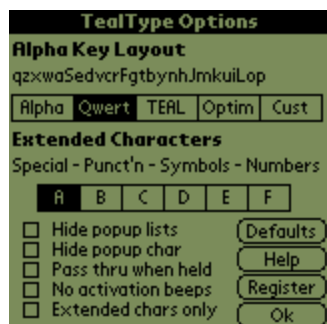
- 1: Special (space, enter, backspace, shift, parentheses)
- 2: Punctuation (comma, period, colon,...)
- 3: Symbols (@, #, \$, %...)
- 4: Numbers (0, 1, 2, 3...)

Other mappings can be selected in the TealType Options panel.

## Setting Options

Set options by running Hackmaster and clicking on the '+' key next to the TealType listing. Note that in the current version of Hackmaster on a color device, the '+' button appears as the second dashed line next to the TealType listing. You will be presented with this screen:

### Options



### Key Layout

You may choose one of the four layouts we have programmed, or create your own using the “Cust” option. The layouts will control which letters the hardware buttons map to, (represented by capital letters) and the order of the letters.

The “Alpha” layout may be the easiest to start with as it presents the letters in alphabetical order:

xyz**A**bcdefg**H**ijklm**N**opqrs**T**uvw

The “TEAL” layout is a bit more optimal, (placing the most frequently used letters in the most efficient positions and presents the double mnemonic device of our company’s name and the broken phrase “VW stormz behind Jack P Ugly fx q”:

vws**T**ormz**E**hind**J**ackpug**L**yfxq

The “Qwert” layout mimics the traditional “qwerty” keyboard layout. It is more optimal than the alphabetical layout and is designed so that you use the same hands that you do when typing on a traditional keyboard, and using similar motions. This makes it easy to use and remember for touch-typists. Note that scrolling in the alphabet bar wraps over at the ends, so that ‘Q’ can be typed more efficiently in this layout with **4RRR** rather than **1LLLLL**.

qzxwa**S**edvcr**F**gtbynh**J**mkui**L**op

The “Optim” layout is based purely on statistics. All letters are ranked by frequency and positions by efficiency. This layout is probably the hardest to learn, but it has the potential for the fastest typing speed:

**zbdTiuvglEnmkwcOrfxyhAspig**

### Special Buttons

By using the four application hardware buttons with the scroll hardware buttons you can type special characters such as numbers and symbols as well as add spaces, backspace, and delete. These special functions are divided into four lists:

*Special characters:*

**{, [, (, caps lock, shift, delete, space, return, tab, ), ], }**

*Punctuation:*

**\ ‘ : - , . ? ! “ ‘ /**

*Symbols:*

**~ ^ % & # @ & \* \_ + = |**

*Numbers:*

**0 1 2 3 4 5 6 7 8 9**

The six options lettered A-F allow you to change the mapping of the four special character lists.

### Hide popup lists

If this option is checked, the list of letters or special characters/functions will not be shown when you press the hardware buttons while using TealType. With this option, you must scroll through letters by memory. It is probably best to have this option unchecked when you are first using the program.

### Hide popup char

By default, the current character will be shown near the current insertion point. Check this option to hide this visual aide.

### Pass thru when held

This option will make the hardware buttons return to their original functions when they are held down briefly without being either released or without a pressing another button to scroll the current entry. Use this option to allow using the hardware buttons for both typing and their original function without needing to turn on and off TealType in between uses.

### No activation beeps

Normally, you will here a beep as you activate or deactivate TealType using the first or last two hardware buttons. This option silences the beeps.

### Extended chars only

This option disables letter typing in TealType, freeing up the hardware buttons for their normal app-switching functionality, but keeping the **app+scroll** combinations for TealType. It is a good setting for people who are comfortable with graffiti but have problems remembering or entering some of the special characters.

---

That’s it. We hope you enjoy the program in all its wacky-ness. Use it to mystify and entertain your friends, seek to phone numbers when on the go, and maybe even do something useful with it. Thanks.

## Appendix A – Compatibility

As we cannot control the style and robustness of other products, we cannot guarantee compatibility with PalmPilot applications beyond those included from Palm Computing. However, we try to resolve compatibility issues as best we can, working with other developers where possible.

*TealType*, like all *Hackmaster* applications, hook into the PalmPilot operating system in a way which may not be compatible with all other programs of this type, as all such programs must share limited system resources. If you experience unexpected behavior or crashes, always try disabling all other hacks to diagnose whether what you experience is the result of a conflict.

## Appendix B - Revision History

None yet!

## Appendix C - Credits

Manual by Vince Lee, Tex Tennison, and Sara Houseman

## Appendix D - Contact Info

TealType by TealPoint Software  
©2000-2002 All Rights Reserved.

TealPoint Software  
454 Las Gallinas Ave #318  
San Rafael, CA 94903-3618  
We look forward to hearing from you.

Please visit us at <http://www.tealpoint.com>, or email us at [contact@tealpoint.com](mailto:contact@tealpoint.com)

## Appendix E- Registering

Currently, you may register by snail mail, electronically through our website at [www.tealpoint.com](http://www.tealpoint.com) with a credit card and a secured server, or through PalmGear HQ at 1-800-741-9070. For the first option, the enclosed registration form is provided for your convenience. You may use this form or simply send the following to the address above.

- Product Name
- E-Mail Address
- HotSync User ID (Pilot Name Required for Passkey generation. It can be found on the main screen of the HotSync application on the Pilot as "Welcome \_\_\_\_\_" or in the corner on a PalmIII or higher)
- Check (drawn off a US Bank) or Money Order for (\$11.95 US) to TealPoint Software

## Appendix F - Disclaimer

We at TealPoint Software are committed to providing quality, easy-to-use software. However, this product is provided without warranty and the user accepts full responsibility for any damages, consequential or otherwise, resulting from its use.

This archive is freely redistributable, provided it is made available only in its complete, unmodified form with no additional files and for noncommercial purposes only. Any other use must have prior written authorization from TealPoint Software.

Unauthorized commercial use includes, but is not limited to:

- A product for sale.
- Accompanying a product for sale.
- Accompanying a magazine, book or other publication for sale.
- Distribution with "Media", "Copying" or other incidental costs.

- Available for download with access or download fees.

This program may be used on a trial basis for 30 days. The program will continue to function afterwards. However, if after this time you wish to continue using it, please register with us for the nominal fee listed in the program.

Thank you.